

I Have Entered Beulah Land

Frances Jane (Fanny) Crosby, 1886

John Robson Sweney

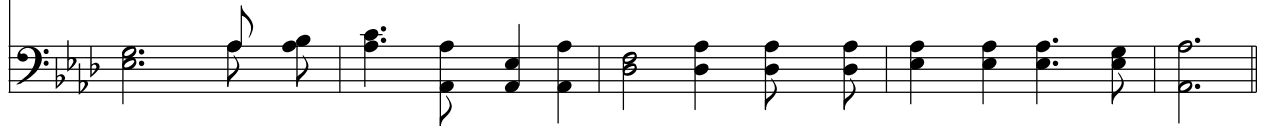
♩=110



1. Oh, my cup is o - ver - flow - ing With the good - ness of the
2. From the sigh - ing and the long - ing, That so oft my heart op -
3. There's a pal - ace o'er the riv - er And its jas - per walls I
4. I have climbed the rug - ged mount - ain, But my Sav - ior led the



Lord; I am trust - ing in His mer - cy, And re - joic - ing in His Word.
- pressed, With my Sav - ior and Re - deem - er Now in per - fect peace I rest.
see, And a - mong its ma - ny man - sions There is one pre - pared for me.
way; Un - to Him shall be the glo - ry, When I reach e - ter - nal day.



Refrain



I have climbed the rug - ged mount - ain, On its sum - mit now I stand; Hal - le -



- lu - jah! hal - le - lu - jah! I have en - tered Beu - lah land.

