

Life's Railway to Heaven

M. E. Abbey, 1890

Charles Davis Tillman

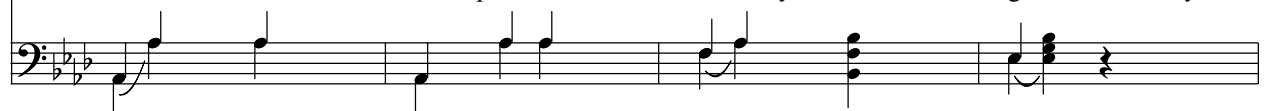
♩ = 105



1. Life is like a moun-tain rail - road, with an en - gin - eer that's brave; We must
2. You will roll up grades of tri - al; you will cross the bridge of strife; See that
3. You will of - ten find ob - struct-ions; look for storms of wind and rain; On a
4. As you roll a - cross the tres - tle, span-ning Jor - dan's swell - ing tide, You be-



make the run suc - cess - ful, from the cra - dle to the grave; Watch the
Christ is your con - duc - tor on this light - ning train of life; Al - ways
fill, or curve, or tres - tle, they will al - most ditch your train; Put your
- hold the Un - ion De - pot in - to which your train will glide; There you'll



curves, the fills, the tun - nels; nev - er fal - ter, nev - er quail; Keep your hand up - on the
mind - ful of ob - struct-ion, do your du - ty, nev - er fail; Keep your hand up - on the
trust a - lone in Je - sus; nev - er fal - ter, nev - er fail; Keep your hand up - on the
meet the super-in - tend - ent, God the Fa - ther, God the Son, With the heart-y, joy - ous,



Refrain



throt-tle, and your eye up - on the rail.
throt-tle, and your eye up - on the rail. Bless - ed Sav - ior, Thou wilt guide us, Till we
throt-tle, and your eye up - on the rail.
plau-dit, "Wear-y pil - grim, wel - come home!"



reach that bliss - ful shore; Where the an - gels wait to join us In Thy praise for - ev - er - more.

